



THE MET

CORPORATE TOWERS

THE FIRST GRADE A STRATA OFFICE
IN MONT KIARA @ KL METROPOLIS

Greetings!

Zerin Properties would like to wish you a Happy New Year! We are excited to invite you for an exclusive preview of a prestigious office tower that offers unique advantages to dynamic LAW FIRMS such as yourselves.

Priced at an affordable **RM950 psf nett**, this is the First Grade A Strata Office in Mont Kiara @ KL Metropolis. The project is slated for completion in 2021.





THE MET

CORPORATE TOWERS

THE FIRST GRADE A STRATA OFFICE
IN MONT KIARA @ KL METROPOLIS

IDEAL FOR
LAWYERS

- 10 minutes Walk to High Court
- Covered Elevated Walkway
- Grand Triple Volume Lobby
- 200 Seat Conference Room
- Shared Meeting Rooms





THE MET

CORPORATE TOWERS

THE FIRST GRADE A STRATA OFFICE
IN MONT KIARA @ KL METROPOLIS



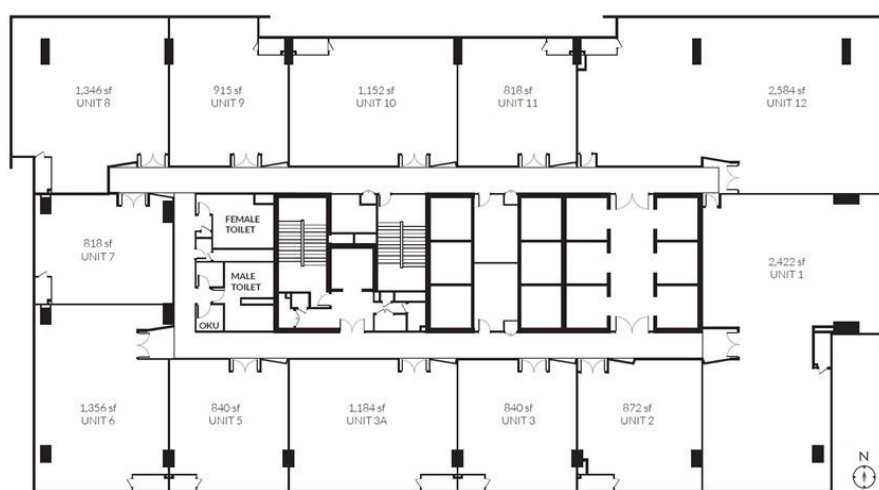
TOWER A EXECUTIVE LEVELS FLOOR PLANS

Individual Units:
818 - 2,584 sqft

Quarter Floor:
4,000 sqft

Full Floor:
16,000 sqft

GENTING VIEW



PALACE VIEW

KLCC/MITEC VIEW



THE MET

CORPORATE TOWERS

THE FIRST GRADE A STRATA OFFICE
IN MONT KIARA @ KL METROPOLIS

**A GAME-CHANGING
BUSINESS DESTINATION**

3 PUBLIC
TRANSPORTATION
POINTS

4 UPGRADE
POINTS TO
MAJOR ROADS

4 IMMEDIATELY
ACCESSIBLE
HIGHWAYS

5 KILOMETRES
TO THE KL
CITY CENTRE





THE MET

CORPORATE TOWERS

THE FIRST GRADE A STRATA OFFICE
IN MONT KIARA @ KL METROPOLIS



As Lead Marketing Agency for this development, Zerin Properties is proud to present an office that will set the benchmark for office buildings in Mont Kiara.

For an exclusive preview of this Grade A Strata Office, please contact:

Quek Wei Kin (PEA 1673)

M: +6012 288 7908

E: quek@zerinproperties.com

Alternatively you may click on the button below to register your interest.

Take advantage of our attractive **EARLY BIRD PACKAGES**.
Limited choice units still available!

[Learn More](#)